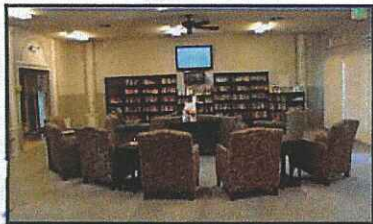


At KingsView Manor, you will discover apartment living with the essential conveniences and comforts of home, at rates you really can afford.

The Manor has roomy floor plans with an inviting appeal, complete with vertical blinds, central heat and air, convenient kitchen area with garbage disposal, refrigerator, gas stove, spacious living room and large bedrooms.

The Clubhouse is the perfect spot for socializing with your new neighbors and is outfitted with comfy chairs and tables, flat panel cable TV and bookshelves packed with lots to read. And check out the activities designed especially for you!



Welcome To Kingsview Manor!

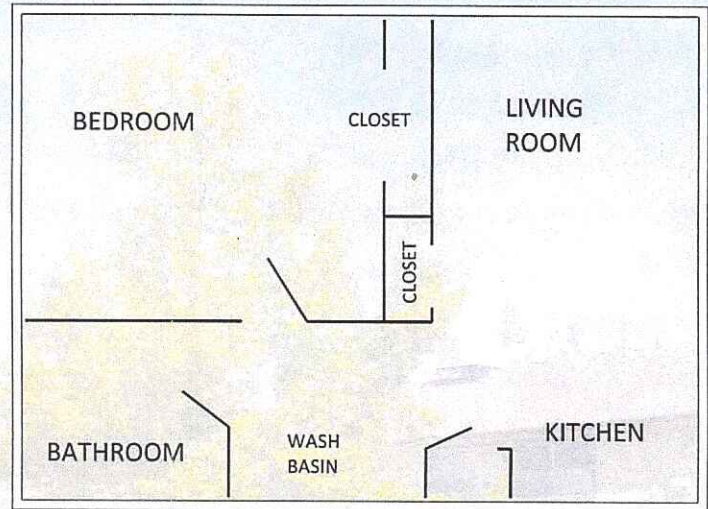
Floor Plan "A"

400sq FT!

1 Bedroom, 1 Bathroom

Rental Rate From \$ _____

Security Deposit \$ _____



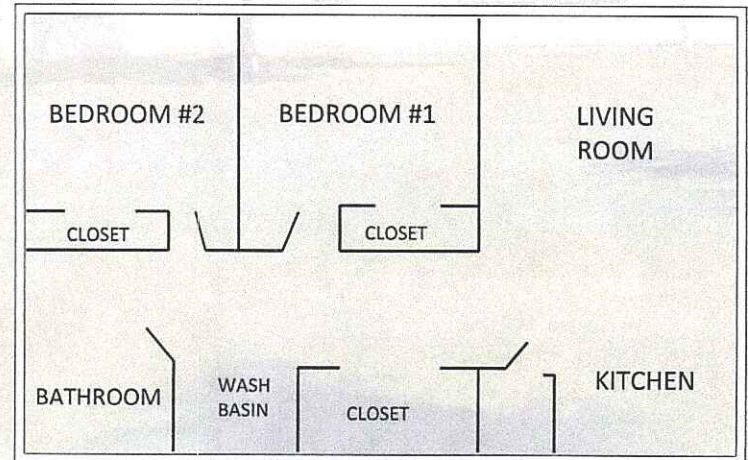
Floor Plan "B"

565sq FT!

2 Bedroom, 1 Bathroom

Rental Rate From \$ _____

Security Deposit \$ _____



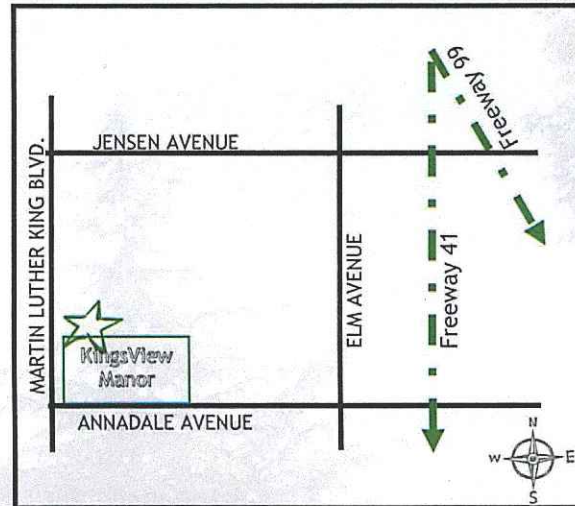
Community Benefits

- Seniors Age 55 & Better
- Lots of scheduled activities!
- Friendly Staff!
- Great Maintenance Team!
- Courtesy Patrol on Call
- Clubhouse with Library & TV
- Close to shopping & downtown
- Convenient parking areas
- Large laundry rooms
- **Section 8 Welcome**
- Ask if you income-qualify!



We are committed to responding to the needs & concerns of our residents.

Here's How To Find Your New Home!



949 E. Annadale Avenue

Fresno, CA 93706

(559) 233-3431

Email: kingsview@SANMARProp.com

Visit this property & others on the web:

www.SANMARProp.com



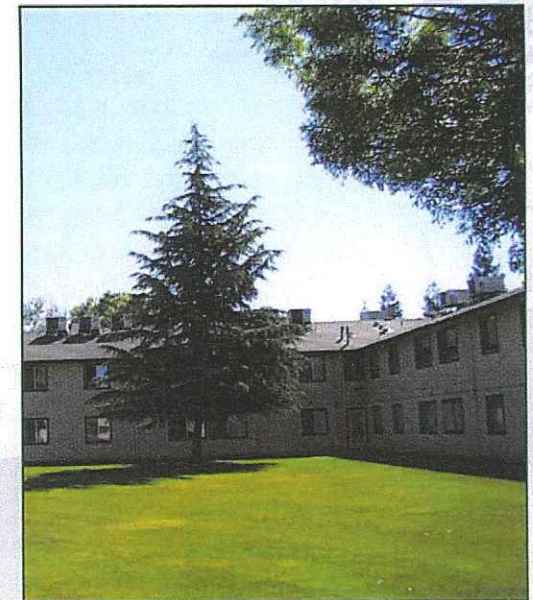
Proudly Managed By:
SAN MAR
PROPERTIES, INC.



Rev. 7/15

Kingsview Manor

*An Affordable Senior Lifestyle
For Age 55 & Better*



949 E. Annadale Avenue

Fresno, CA 93706

Phone (559) 233-3431